

# PROVENT

## IN-LINE DUCT MOUNTED FAN



The high performance ProVent fans feature a compact design that makes them suitable for applications where space is limited. Their mixed-flow impeller provides powerful air flow making them suitable for homes, apartments and commercial buildings.

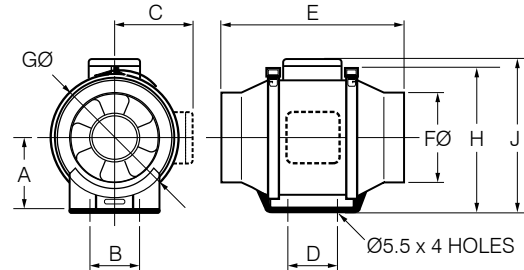
- High performance mixed-flow Impeller.
- Models 150SW and 200SW include an external mounted 2-speed switch.
- Models 150TSW and 200TSW include a 1-30 minute adjustable run-on timer and external mounted 2-speed switch.
- Fan body can be removed for maintenance or repair without disturbing the duct system via specially designed support brackets.
- Integrated mounting foot makes installation easier.
- All models include plug and lead for easy plug-in installation.
- Suitable for both supply and exhaust air applications.

### ACCESSORIES

- Run-on Timers & Speed Controllers.
- Flexible Duct - Fire Rated AS/NZS 4254.
- Backdraft Dampers.
- Internal and external grilles.

\*Conditions apply. For details visit: [fantechtrade.com.au/warranty](http://fantechtrade.com.au/warranty)

### DIMENSIONS



MODEL NO.	A	B	C	D	E	FØ	GØ	H	J
RIL-100	100	60	115	80	303	97	180	205	215
RIL-125	100	60	115	80	258	123	180	205	215
RIL-150SW	112	60	127	80	295	147	203	225	239
RIL-200SW	124	94	141	100	302	198	220	251	265
RIL-150TSW	112	60	127	80	295	147	203	225	239
RIL-200TSW	124	94	141	100	302	198	220	251	265

All dimensions in mm

### SPECIFICATIONS

MODEL NO.	SPEED	M <sup>3</sup> /HR <sup>†</sup>	L/SEC <sup>†</sup>	FAN SPEED RPM	dB(A) @ 3M	WATTS	VOLTS
RIL-100	High	245	68	2220	37	24	230-240
	Low	202	56	1850	32	18	230-240
RIL-125	High	320	89	2250	38	30	230-240
	Low	252	70	1900	33	22	230-240
RIL-150SW / TSW**	High	562	156	2500	45	50	230-240
	Low	468	130	2150	38	44	230-240
RIL-200SW / TSW**	High	1040	289	2500	47	120	230-240
	Low	846	235	2000	42	100	230-240

\*\* Includes a 1-30 minute adjustable run-on timer.  
<sup>†</sup> Air flow without duct and fittings

#### SPECIAL NOTES

Timer models RIL-150TSW and RIL-200TSW include a plug and lead to suit HPM 33 or Clipsal 413/4P-WE bases (with 4 pin socket).  
 RIL-150TSW and RIL-200TSW cannot be speed controlled using an external controller.