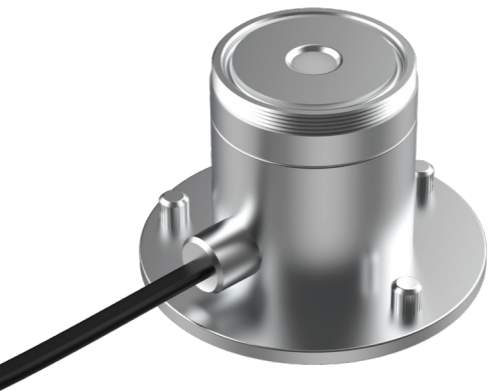




# PAR Sensor (BLS-PAR)



Manual

## Parameters

Name	PAR Sensor
Model	BLS-PAR
Size	D80mm*H74mm, with data cable
Protection Level	IP67
Operating Temperature	0~50 °C
Operating Humidity	≤90%, non-condensing
Operating Voltage	DC10~30V
Operating Power Consumption	≤0.1W
Measuring Range	0~2500 $\mu\text{mol}/\text{m}^2 \cdot \text{s}$
Precision	±2% (1000 $\mu\text{mol}/\text{m}^2 \cdot \text{s}$ , 60%RH 25°C)
Linearity	≤±1%
Annual Stability	≤±2%
Communication Port	RJ12 crystal plug, 6P6C, DC24V Input
Communication Parameters	RS485 slave, baud rate of 9600, no parity, 8 data bits and 1 stop bit
Accessories	Splitter*1, RJ12 connection cable 5m*1, Level adjustment screw*3
Note	Only one PAR sensor can be connected to the Beleaf system, which is used for light channel 1 to display real-time light value, and can be used for light channel 1 for constant light control.

## Function Description

Measure the photosynthetically active radiation, and measure the light intensity received by plants in the Beleaf system, and the Beleaf system can perform constant light control according to the sensor value.