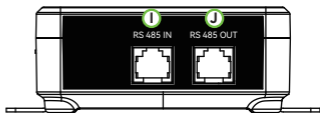
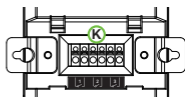




BeLeaf Dry Contact Station



Top View



Bottom View

- A. Date and time
- B. Channel status
- C. Confirm button
- D. Up button
- E. Down button
- F. Power input (When connecting more than 10 BDC-4 to the host, a 24V adapter needs to be plugged in)
- G. CH4 dry contact output
- H. Output power is only available when an adapter is connected in F
- I. Connect to BeHive host
- J. Connect to the next device
- K. CH1, CH2, CH3 dry contact outputs respectively

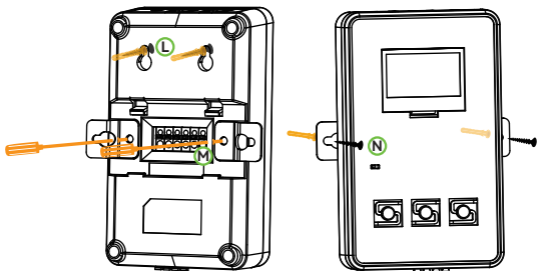
Specification

Model	BDC-E4 / BDC-I4
Operating Voltage	DC 24V
Operating Current	50 mA
Dry contact	Normally open, maximum working voltage current of 30V 1A.

Package Contents

BeLeaf Dry Contact Station	*1	Expansion Screw Set	*2
5 Meters RJ12 Cable	*1	Hanging Plate	*2
Manual	*1	Small Screws	*2

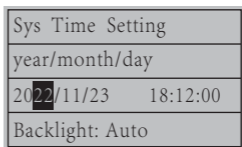
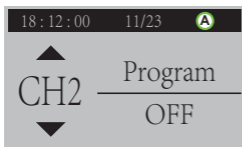
Installation



Expansion Screw (L): Fix the expansion screw set on the wall, and hang the product on it.

Hanging Plate (M+N): First use small screws to lock the hanging plate on the back of the product, and then lock the hanging plate on the wall.

Operating instruction



- In the main interface state, press the up and down buttons to cycle through each channel's function mode and status.
- Press the confirm button, the cursor will blink, and click on the A area to enter the time and date settings and screen backlight status settings. The up and down buttons can move the cursor. Move to the position to be changed, press the confirm button, and the cursor will blink to enter the change state. The up button increases the number, and the down button decreases the number. After modifying, press confirm.
- The device will return to the main interface after 10 seconds of inactivity.