

IDV

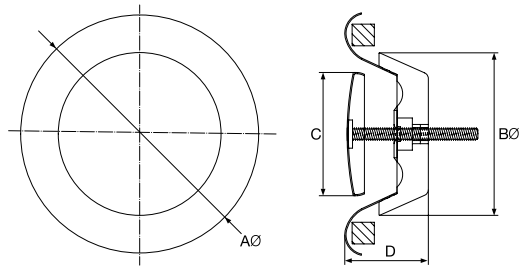
INTERNAL DUCT VALVE



The IDV is constructed from high quality steel with a white finish. The valve body is equipped with a mounting ring for ease of installation. Air flow can be easily adjusted by rotating the control disc.

- Manufactured from high quality steel with a white finish.
- Stylish design.
- Adjustable air flow.
- Quick & easy installation.
- Includes mounting ring.

DIMENSIONS



MODEL NO.	AØ	DUCT DIAMETER BØ	C	D
IDV100	140	100	74	39
IDV150	201	150	120	51

All dimensions in mm

IDVSS

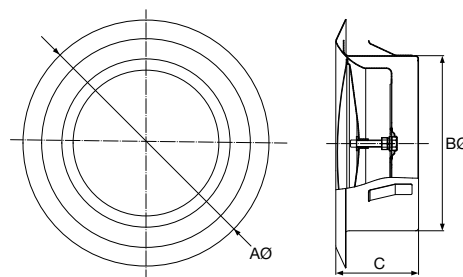
INTERNAL DUCT VALVE



The IDVSS is constructed with high quality 304 stainless steel to minimise the risk of rust. The valve body is equipped with a mounting ring for ease of installation. It can be used for both return and supply air with air flow easily adjusted by rotating the control disc.

- Constructed with 304 quality stainless steel.
- Stylish design.
- For both return & supply air.
- Quick & easy installation.
- Includes mounting ring.

DIMENSIONS



MODEL NO.	AØ	DUCT DIAMETER BØ	C
IDVSS100	140	100	58
IDVSS125	172	125	58
IDVSS150	217	150	70

All dimensions in mm



SINGLE AND DUAL LINEAR SLOT
INTERNAL GRILLES WITH WHITE FINISH

LINEAR SLOT

INTERNAL GRILLE

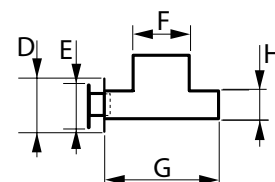
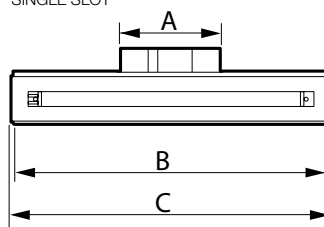


The sleek looking Linear Slot internal exhaust grilles have been designed to suit the modern and contemporary bathroom, ensuite or toilet. They come with a 150mm duct connection and are available in single and dual slot. Comes in white and silver finishes as standard.

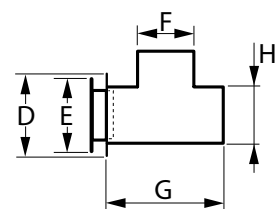
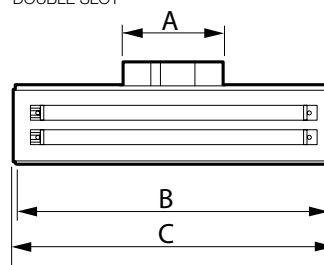
- Discretely blends into the latest architecturally designed bathroom or ensuite.
- Works in conjunction with a duct mounted, roof mounted or external wall mounted fan.
- High quality galvanised steel cushion head box.
- Oval spigot allows 150mm duct connection.
- Available with single slot, or dual slot for additional air flow.

DIMENSIONS

SINGLE SLOT



DOUBLE SLOT



MODEL NO.	NO. OF SLOTS	COLOUR	CUT OUT SIZE	A†	B	C	D	E	F†	G	H
LSD125-600A	1	Anodised Silver	525 x 50mm	172	550	553	100	80	105	200	55
LSD125-600W	1	White									
LSD225-600A	2	Anodised Silver	525 x 95mm	172	550	553	139	126	105	200	98
LSD225-600W	2	White									

† Oval shaped duct spigot suits 150mm flexible duct.
All dimensions mm

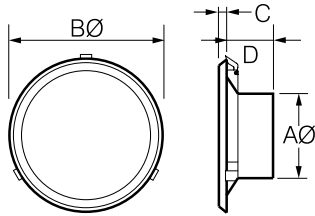


IALG INTERNAL CEILING GRILLE



- Air flow can be easily adjusted by rotating the control disk.
- Sleek, stylish design with a non-reflective white surface.
- High quality ABS plastic, scratch & chip resistant.

DIMENSIONS



MODEL NO. (SINGLE UNIT ONLY)	NO. OF GRILLES IN BULK PACK	DUCT DIAMETER	AØ	BØ	C	D	HOLE CUTOUT Ø
IALG150	10	150	145	260	16	90	224
IALG200		200	194	315	16	95	285
IALG250		250	245	390	16	115	345
IALG300		300	295	440	16	105	398

All dimensions in mm

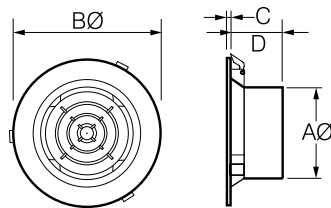


IDJG INTERNAL CEILING GRILLE



- Air flow can be easily adjusted by rotating central button.
- High quality ABS plastic, scratch & chip resistant.
- Non-reflective white surface.

DIMENSIONS



MODEL NO. (SINGLE UNIT ONLY)	NO. OF GRILLES IN BULK PACK	DUCT DIAMETER	AØ	BØ	C	D	HOLE CUTOUT Ø
IDJG150	10	150	143	240	5	98	210
IDJG200		200	193	290	5	92	266

All dimensions in mm

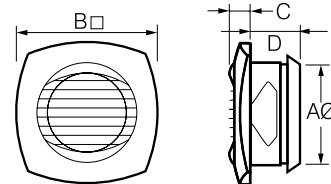


ILG INTERNAL CEILING GRILLE

Ceiling mounted inlet/outlet clip-in grille.

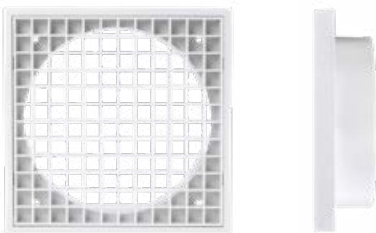


DIMENSIONS



MODEL NO.	DUCT DIAMETER AØ	B□	C	D	HOLE CUTOUT Ø
ILG125	125	170	26	60	130

All dimensions in mm

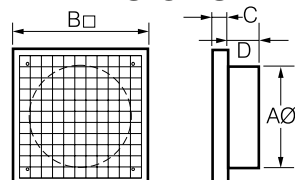


ECG INTERNAL CEILING GRILLE

Ceiling mounted inlet grille.



DIMENSIONS



MODEL NO.	DUCT DIAMETER AØ	B□	C	D	HOLE CUTOUT Ø
ECG100	100	140	10	35	100
ECG125	125	160	13	25	125
ECG150	150	175	12	35	150

All dimensions in mm

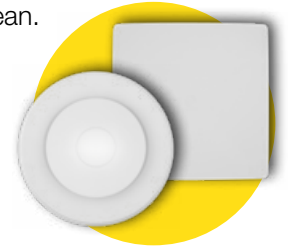


RAPID RESPONSE

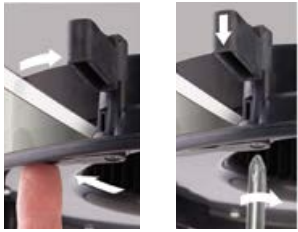
GRILLE TO DUCT CONNECTOR

The easy to install Rapid Response grille to duct connectors are designed to fit our modern 8" or 10" Rapid Response grilles and flexible duct. The grille to duct connectors are suitable for ducted systems that use an in-line, roof, or external wall mounted fan. Grilles are quick to remove, making them easy to clean.

- High strength swing clips make installation easy.
- Can be retrofitted into a standard 8" (255mm) or 10" (290mm) round cut out.
- Designed to fit our range of 8" & 10" Rapid Response grilles.
- Suitable for 150mm ducting.

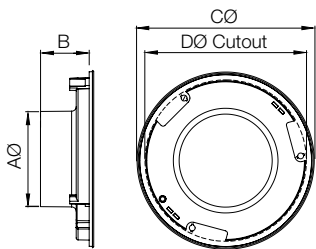


See page 34-35 for full range of Rapid Response grille options.



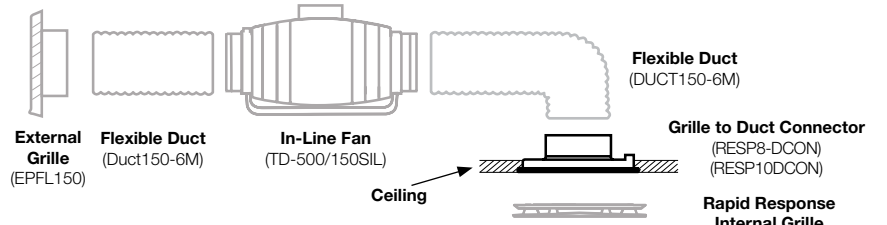
Rotate swing clips to hold grille to duct connector in place.

Tighten screws so clips clamp onto ceiling board.



All dimensions in mm

TYPICAL IN-LINE INSTALLATION



DIMENSIONS

MODEL NO.	DESCRIPTION	AØ	B	CØ	DØ HOLE CUTOUT
RESP8-DCON	Grille to duct connector to suit 8" Rapid Response grilles	145	75	270	255
RESP10DCON	Grille to duct connector to suit 10" Rapid Response grilles	145	75	315	290

Grille to Duct Connector (RESP8-DCON) (RESP10DCON)

Rapid Response Internal Grille (RESP8-SQWH-TRILED) (RESPG150SQWH-TRILED)



* Oval spigot designed to fit 150mm duct. Spigot can be mounted horizontally or vertically.

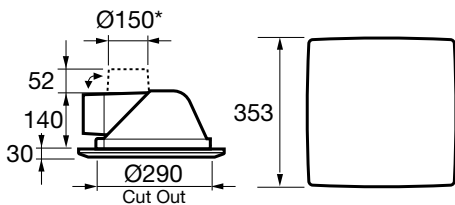
RAPID RESPONSE

CEILING GRILLE WITH CLIP-IN SPIGOT

The Rapid Response ceiling grille with clip-in spigot has been designed for ducted systems using an in-line fan and external grille. It can be positioned for horizontal or vertical duct connection.

- Can be retrofitted into a standard 10" round fan cut out.
- Unique 'push-out' ceiling clamps make installation easy.
- Clip-in spigot makes installation and duct connection easier.
- Grille can be easily removed for cleaning and rotated to align with walls.

DIMENSIONS



All dimensions in mm

Model No. RCG150SQWH